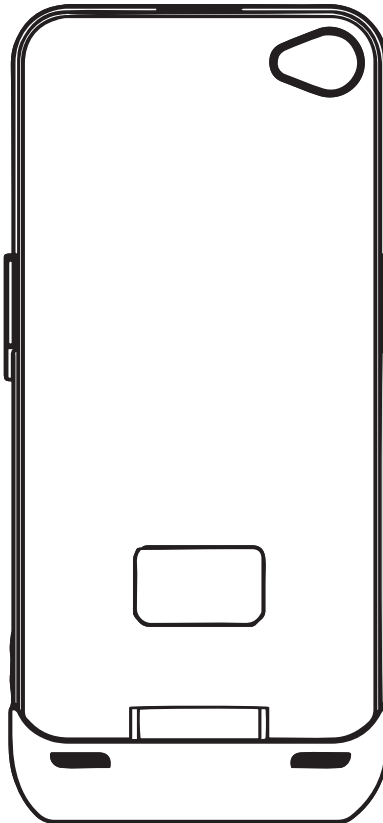


**Power Case DVR
1080P Hidden Camera
Model: DVR225
User Quick Guide**



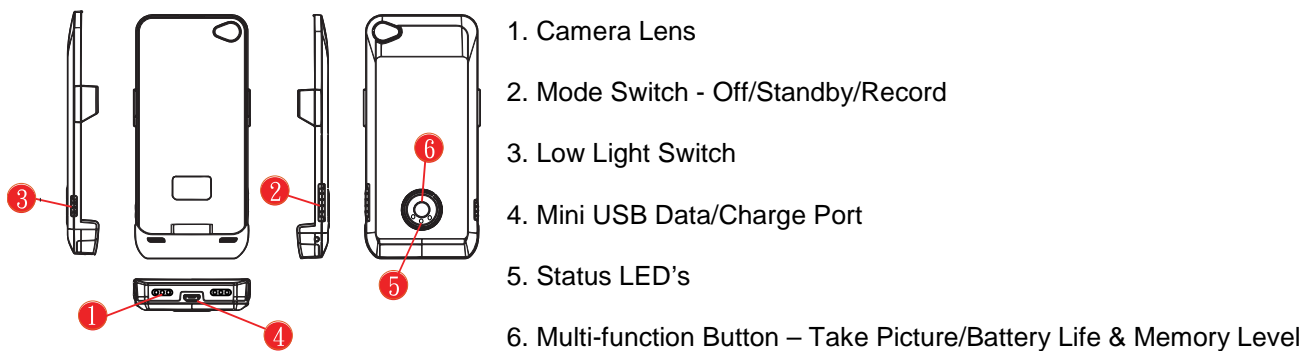
Introduction:

The Power Case DVR camera is a high definition camera and video recorder with built in memory, uniquely disguised as an extended battery case for iPhone 4 and 4S. You do not need an iPhone for this clever little case to work. The Power Case DVR is a stand-alone system with all the set up and features built into the case itself. Just position the Power Case DVR to record your targeted area. Please read all instructions carefully to understand the full functions of your Power Case DVR video camera system.

The Power Case DVR comes with many features:

- Automatic camera orientation: the camera will always be in the correct horizontal orientation, no matter if the case itself is facing up or down.
- True High Definition video resolutions – 1080P or 720P.
- Take snap shots quickly with one push of the button.
- Several personal settings to make this camera work to your desire.
- Low light High Dynamic Range (HDR) & Wide Dynamic Range (WDR)
- Easy to operate via external switches and button.

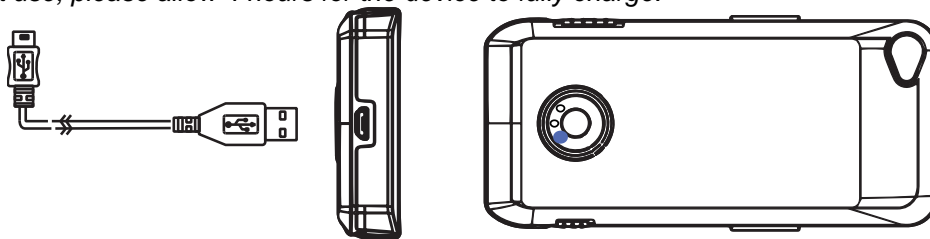
Names and parts:



Charging the battery:

1. With the Mode Switch OFF, use the included USB cable to connect the device to a computer or a USB wall charger(not included).
2. One blue LED on the back button will light on while charging; once charge is finished the LED will turn off.

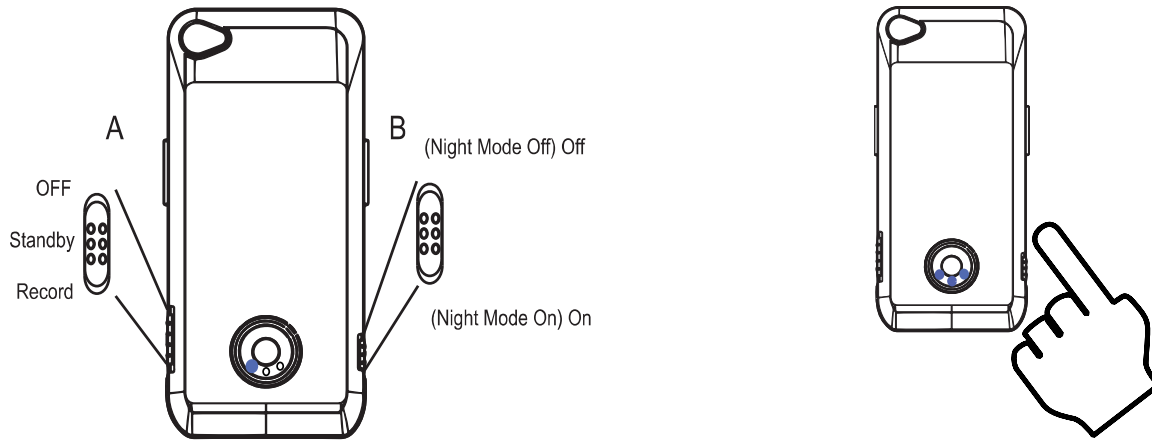
Note: Before first use, please allow 4 hours for the device to fully charge.



Operation:

Mode Switch (A) has 3 positions

1. Off – To turn the device off, slide the switch all the way up to the OFF position. All LED lights will turn off, confirming power-down is complete.
2. Stand-By – To place the device in Stand-By mode, slide the switch to the middle position. The left-side status LED will stay lit, confirming the device is in Stand-By mode. If Vibration Alert is enabled, it will also vibrate once when entering this mode.
3. Record – To place the device in Video Record mode, slide the switch from the middle (Stand-By) down to the final position. The left-side status LED will now intermittently flash, confirming the device is in Record mode and currently recording video. If Vibration Alert is enabled, it will also vibrate once when entering this mode.



Low Light Switch (B) has 2 positions

1. Low Light Off
2. Low Light On – For best results, turn this function on prior to entering a dark area. If a video is currently recording and the switch moved either direction, it will stop the current file and start a new one.

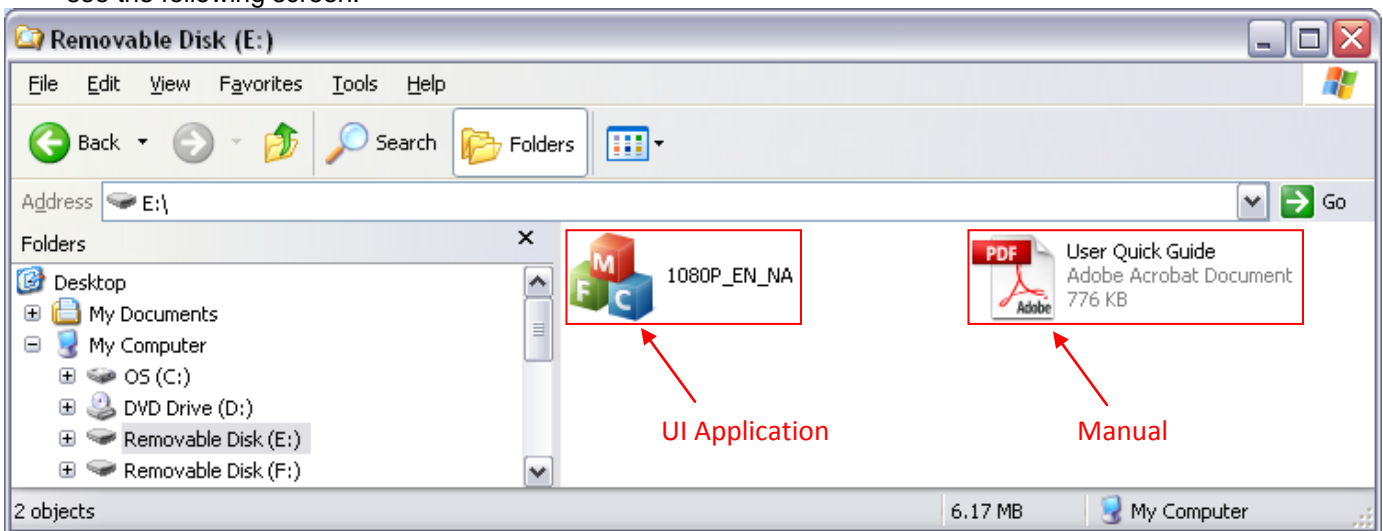
Middle Button has 2 functions

1. Still Photos – With the Mode switch set to Stand-By, press and release the button once to take a photo.
2. Battery & Memory Level – With the Mode switch set to Stand-By, press and hold the button for approximately 2 seconds. The first set of LED’s will indicate the battery power level, then all lights will turn off. Immediately after the lights turn off, the next set of LED’s will indicate the free memory level, then return to the single LED confirming the device is in Stand-By mode. List below applies for both Battery and Memory indicators.
 - a. 1 LED – 20-30% remaining
 - b. 2 LED’s – 50-60% remaining
 - c. 3 LED’s – 90-100% remaining

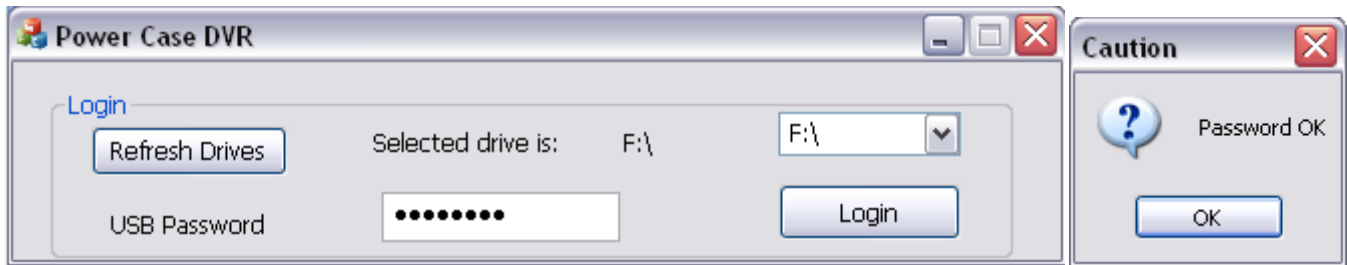
Accessing the Device:

The Power Case DVR comes with user interface (UI) software for setting up your preferences and options, as well as providing secure access to your video and photo files. It runs directly from the device without installing on the computer. You must login in to access the settings menu, as well as gain access to the second, secure drive containing the recorded files.

1. With the device connected to a computer using the included USB cable, switch the device into Standby Mode.
2. The first time you attach the device to a computer, the computer will detect a new device and load the drivers. Once complete, open the newly installed disk in Windows Explorer(My Computer) to view the files and you will see the following screen:

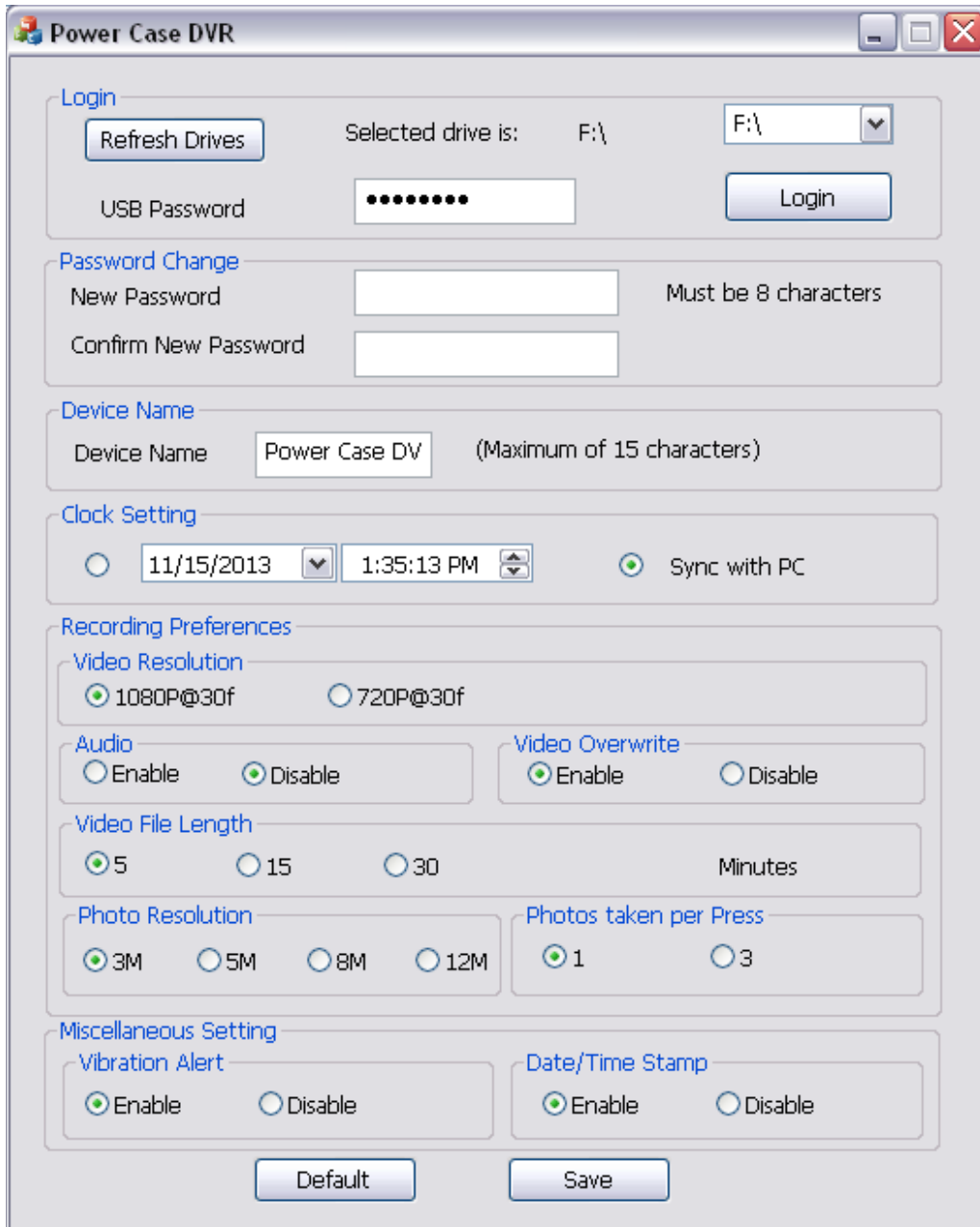


3. Double-click on the Power Case DVR UI application to open and run it.
4. The password box will appear:



- a. Click on Refresh Drives
 - b. A list of drives will appear in the drop down list to the right. Select the one that matches the drive where the UI application was found. In our example, it is drive F:\
 - c. The default password is 00000000. You may change your password in the setup, but please remember to save it somewhere for future reference.
 - d. Click Login and click OK on the 'Password OK' popup box to enter the settings UI.
5. Once login is complete, the setup menu will appear and the secure drive will now be accessible through Windows Explorer.

Device Settings:



When navigating the User Interface, you may choose to make single or multiple changes in one pass. Once you have completed all desired changes, click the “Save” button at the bottom of the UI.

Password Change – If you wish to change the default password, you may do it here. The password must be exactly 8 characters in length and may include any combination of letter, characters and or numbers. Enter your desired password into the “New Password” field and again in “Confirm New Password.” Both fields must match for the new password to be saved.

Device Name – You may assign the device a name so it will be easily recognizable once connected to a computer. The device name will also be shown on the Time Stamp when that option is enabled.

Clock Setting – The device date and time may be set manually by clicking on the first radio button and changing the date and time settings. Alternatively, you may select the second radio button to allow the device to sync its date and time settings with those on the computer to which it is currently attached. Neither time setting will be put into effect until the “Save” button has been clicked, please keep this in mind especially when setting the time manually.

Recording Preferences:

Video Resolution – Select the radio button by either 1080P or 720P for your preference of video recording resolution.

Audio – ***Law Enforcement and Export models*** may have the option of including audio on the video recordings.

Select the appropriate radio button of your choice to either enable or disable this feature. ***If you do not have one of these models, this option will be completely disabled and will not be visible in the UI.***

Video Overwrite – When the memory has reach its capacity, you may choose to have the device either stop recording or continually delete the oldest file and replace it with a new one. To stop recording and retain all files, select the radio button by “Disable”; to continue recording and overwrite the older files with newer ones, select the radio button by “Enable.”

Video File Length – The video files are managed by maximum length of the recording. You may select 5, 15 or 30 minute durations. Once a recording has reached that time limit, the recording will stop, be saved in the memory and a new recording will begin at the prior ending point. If the Mode Switch is moved out of Record before that time limit, the recording will stop at that point in time and save to the memory. If the memory is approaching capacity and Video Overwrite is disabled, the recording will be cut short and saved such that the file will fit in within the remaining memory.

Photo Resolution – The photo resolution is managed by the number of Megapixels. You may select 3, 5, 8 or 12 Megapixel resolutions.

Photos taken per Press – Either 1 or 3 photos can per taken by the device per single press of the Multi-function Button when the Mode Switch is in Standby.

Vibration Alert – This option toggles whether the device will vibrate when switching modes or not. The device will always vibrate when power is low.

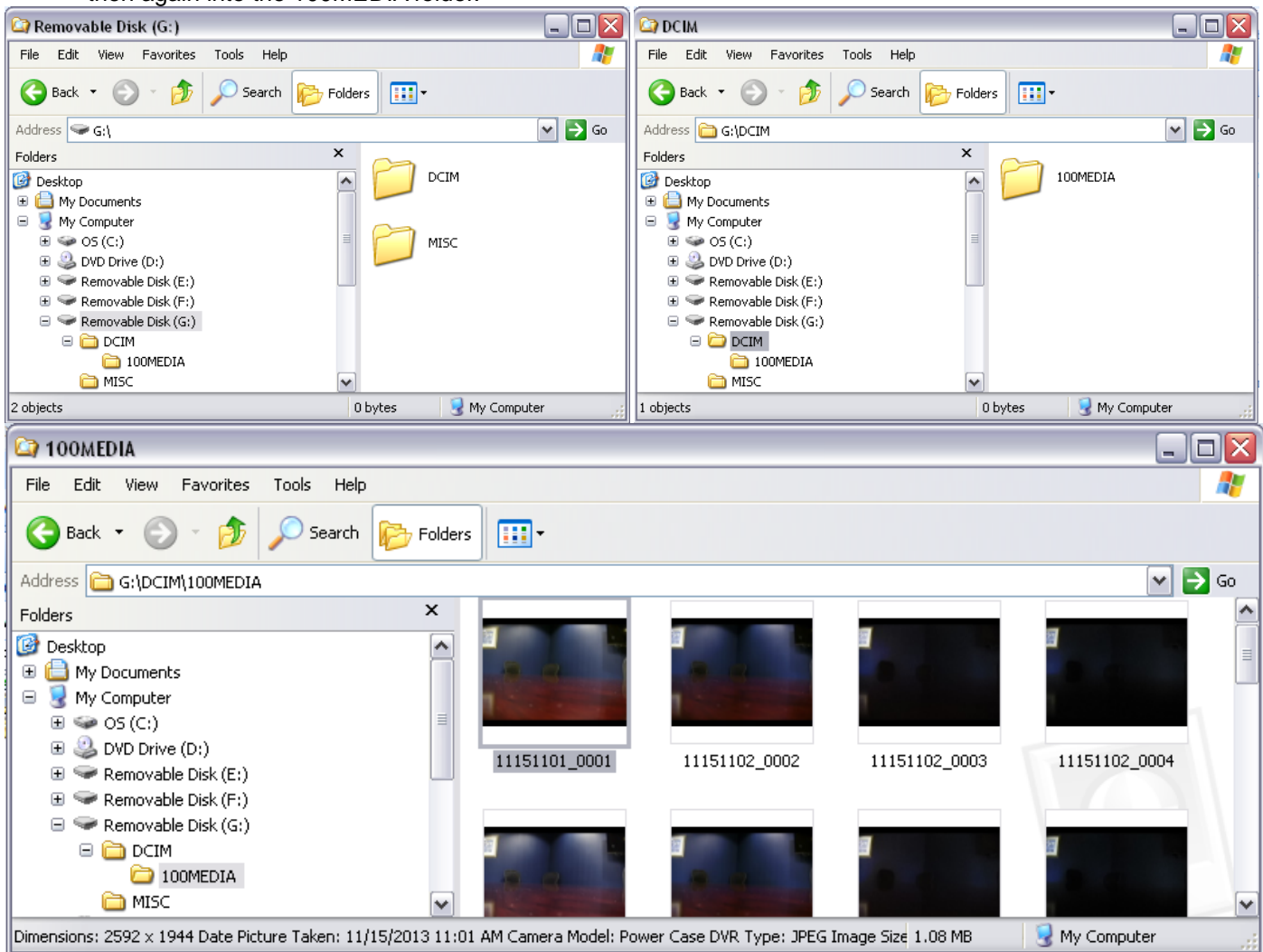
On – The device will vibrate when entering Standby and Record modes and when switching Low Light mode ON or OFF while in Record mode.

Off – The device will only vibrate to alert that the battery is low.

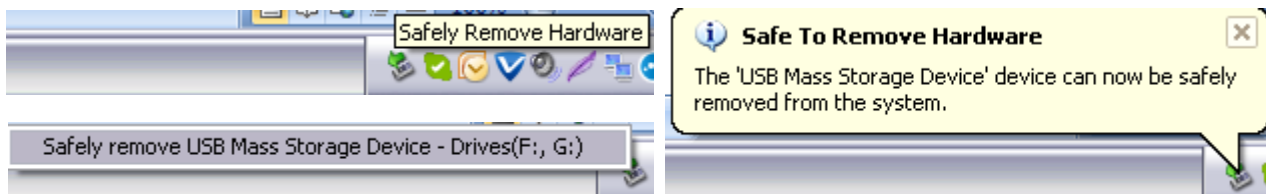
Date/Time Stamp – Enabling this option will place the date and time, from Clock Setting, into video recordings and photos taken by the device.

File Access and Management:

1. To access the video and picture files, you must first login to gain access to the second, secure drive containing the files. See "Accessing the Device" above.
2. Once you have logged in and opened the secure drive in Windows Explorer, navigate into the DCIM folder and then again into the 100MEDIA folder.



3. Once inside both folders, you may directly manage your files here.
 - a. Double-click any file to view/play your recordings
 - b. Drag and drop or right click to save them in another location.
 - c. You may delete files from the device memory.
4. When finished accessing the files, remember to always disconnect device within Windows using the Safely Remove Hardware function on your computer. Failure to do so may corrupt the devices storage and void the warranty.



FAQ

Q. My PC does not detect the device.

A: Connect the Power Case DVR device to a computer using the included USB cord. Your PC will automatically install a device driver. If it does not, please try the following trouble shooting:

1. If the PC system has no response, including any alert sound or any positive or negative reaction after plugging in the device, it might be that the USB port you are using is not working or that the USB cable is not working. Try to repeat the connection again or switch to another USB port. Check the USB cable is functioning by trying another micro USB cable.
2. If the system has reacted, but can't recognize the plug-in device after running for a while, please check & update your windows system to the latest version. Open the "Windows Update" function under the "Control Panel" to check if you have any uninstalled updates. Be sure that the Service Pack version for your applicable Windows system is the latest version available, and no older than these list below:
 - a. Windows 2000, SP4
 - b. Window XP, SP3
 - c. Windows Vista, SP2
 - d. Windows 7, SP1
 - e. Windows 8
3. Some anti-virus software will stop the notification windows, preventing any system or driver notifications. Temporarily disable or close any anti-virus software installed on your Windows system, then repeat steps 1 and 2 as necessary.

Q. What drive is my Power Case DVR stored on?

A. Every computer is different. Go back and read "Accessing the Device" to discover your drives.

Q. Why are there two drives?

A. One contains the user interface(setup screen) software and the other stores all the media.

Q. Will the Power Case DVR charge my phone or provide extra power for my phone?

A. No, the battery is designed to run the camera system only.

Q. Will it allow my computer to see and download files from my iPhone?

A. No.

Q. Can I turn off any of the blue indicator lights off, such as during recording?

A. No.

Q. Can I disable the vibration?

A. Yes, see "Device Settings" for instructions and more information.

Q Will it fit my iPhone 5? Will it fit my iPhone 3?

A. No, it will only fit the iPhone 4 and 4s models.

Note: you don't even need a phone or a working phone as the unit is all self-contained

Specifications:

Camera Sensor	1/3" CMOS, 3 Mega Pixels
Camera Lens	F2.7 / 3.4 mm / 4G(Optical)
Field of View	120 degrees
Video Format	.MOV
Video Resolution	1920x1080@30fps or 1080x720@30fps
Photo Format	.JPEG
Photo Resolution	3, 5, 8, or 12 Megapixels
Memory	16GB
Battery	1200mA, 3.7V Lithium
Battery Charge Time	Approx. 4 Hours
Battery Life	Approx. 3 Hours
Continuous Recording Time	Approx. 3 Hours(memory limited)
Data Connection	USB 2.0
Weight	2.5 oz., 72 g
Dimensions	7.3 x 2.4 x 0.7 in, 185 x 61 x 17 mm

Manufacturer's Limited Warranty

Manufacturer warrants all Covert Video and Sleuth Gear Hidden Video Products (Product) assembled and sold by Manufacturer to be free of defects in material and workmanship, subject to the following conditions. The duration of Manufacturer's warranty with respect to the Product is limited to one (1) year from the date of sale to the original consumer purchaser only for Products delivered within the fifty (50) states of the United States, District of Columbia, or the possessions and territories of the United States

No other express warranties are made with respect to any Product. All implied warranties, including warranties of merchantability and fitness for a particular purpose are limited to the warranty period set forth above. This warranty is not transferable and applies only to the original consumer purchaser of the Product.

Manufacturer will, as its sole obligation under this warranty, replace or repair, at its option, any Product that does not conform to this warranty. Under no circumstances will the Manufacturer issue credit or give a refund for Product covered by this warranty. Furthermore, under no circumstances will Manufacturer be liable for any incidental or consequential damages under this warranty or any implied warranties.

What is not covered:

This limited warranty does not cover Products that in Manufacturer's judgment have damage resulting from any (i) deviation from Manufacturer's operating instructions as printed in Manufacturer's catalog or on any packaging, labels or other literature provided with a Product, (ii) installation of a Product in a manner which is inconsistent with Manufacturer's written instructions, (iii) alteration, modification of or tampering with a Product, (iv) misuse, (v) neglect, (vi) abuse, (vii) accident, (viii) power surge, static electricity or other electrical discharge, (ix) normal wear and tear, (x) commercial use, (xi) service by anyone other than a Manufacturer authorized repair facility, or (xii) other improper application, installation or operation of the Product. Or, (xiii) have been purchased from inventory clearance or liquidation sales or other sales in which Manufacturer expressly disclaims its warranty obligation pertaining to the Product.

How you (the Customer) can get service:

To obtain warranty service during the warranty period, you must return the defective Product with the original receipt to the original place of purchase. Contact them for return instructions.

If warranty service is needed at any time during the warranty period, the purchaser will be required to furnish a sales receipt/proof of purchase indicating the date of purchase, amount paid and place of purchase. Customers who fail to provide such proof of purchase will be charged for the repair of any Product.

How state law relates to the warranty:

Some states do not allow limitations on how long implied warranties last, or the exclusion or the limitation of incidental or consequential damages. So the above limitations or exclusions may not apply to you. This warranty gives you specific legal rights. You may also have other rights that may vary from state to state.

NO PERSON IS AUTHORIZED BY MANUFACTURER TO MODIFY OR ADD TO THIS LIMITED WARRANTY.

For warranty information on Products delivered outside the United States please contact the original place of purchase.

DO NOT ATTEMPT TO RETURN PRODUCT TO ORIGINAL MANUFACTURER, AS THIS PRODUCT HAS BEEN MODIFIED AND IS NO LONGER SUBJECT TO ORIGINAL MANUFACTURER'S WARRANTY. IN THE CASE OF A DEFECTIVE PRODUCT, CONTACT PLACE OF PURCHASE FOR RETURN PROCEDURE.

IT IS THE USER'S RESPONSIBILITY TO ENSURE THAT THIS EQUIPMENT IS USED IN ACCORDANCE WITH THE LAW(S) OF THE JURISDICTION IN WHICH THIS EQUIPMENT IS UTILIZED.

THIS PRODUCT MAY BE SUBJECT TO THE JURISDICTION OF THE U.S. WIRE AND COMMUNICATIONS ACT (18 UNITED STATES CODE §§ 2510-2522) (HEREINAFTER REFERRED TO AS "ACT") REGARDING SURREPTITIOUS RECORDING DEVICES. THE USES OF SUCH PRODUCTS ARE REGULATED BY THE ACT. ADDITIONALLY, THE LAWS OF SOME STATES, COUNTIES, CITIES OR LOCALITIES MAY PROHIBIT THE POSSESSION AND/OR USE OF THIS OR SIMILAR PRODUCTS. IT IS THE RESPONSIBILITY OF THE RETAIL BUYER AND/OR FINAL CONSUMER (HEREINAFTER REFERRED AS "BUYER") TO ASCERTAIN, UNDERSTAND, AND OBEY ANY AND ALL APPLICABLE LOCAL, STATE, AND FEDERAL LAWS REGARDING POSSESSION AND USE OF THIS PRODUCT. BY PURCHASING THIS PRODUCT THE BUYER REPRESENTS THAT IT WILL INDEMNIFY THE MANUFACTURER AND/OR DISTRIBUTOR AND HOLD THEM HARMLESS FOR ANY POSSESSION, USE AND/OR MISUSE THAT VIOLATE ANY FEDERAL, STATE OR LOCAL LAW OR REGULATION REGARDING AUDIO AND/OR VIDEO DEVICES. BUYER AGREES TO CONSULT WITH AN ATTORNEY AT LAW REGARDING POSSESSION OR APPROPRIATE USE OF A COVERT DEVICE. NOTE THAT LAWS AND REGULATIONS VARY FROM STATE TO STATE. IF BUYER EXPORTS THIS PRODUCT, THE BUYER WILL COMPLY WITH US EXPORT CONTROL LAWS AND ANY APPLICABLE DEPARTMENT OF COMMERCE, STATE AND TREASURY REGULATIONS GOVERNING EXPORTS AND SALES TO PROHIBITED END USERS. DIVERSION OR RE-EXPORT CONTRARY TO U.S. LAW IS PROHIBITED. BUYER SHALL COMPLY WITH ALL APPLICABLE FEDERAL, STATE, AND LOCAL LAWS AND REGULATIONS GOVERNING THE SALE OF THIS PRODUCT, INCLUDING U.S. EXPORT CONTROL LAWS AND THE U.S. DEPARTMENT OF COMMERCE AND TREASURY REGULATIONS GOVERNING SALES TO PROHIBITED END USERS.

PART 15 LOW POWER: ANY CHANGES OR MODIFICATIONS TO THIS EQUIPMENT WITHOUT THE EXPRESS AUTHORIZATION OF THE MANUFACTURER COULD VOID THE USER'S AUTHORITY TO OPERATE THIS EQUIPMENT(RULE 15.21 OF THE FCC).

THIS EQUIPMENT HAS BEEN TESTED AND HAS BEEN FOUND TO BE IN COMPLIANCE WITH THE LIMITS FOR A CLASS B DIGITAL DEVICE, PURSUANT TO PART 15 OF THE FCC RULES. THESE LIMITS ARE DESIGNED TO PROVIDE REASONABLE PROTECTIONS AGAINST HARMFUL INTERFERENCE IN A RESIDENTIAL INSTALLATION. THIS EQUIPMENT USES, GENERATES AND CAN RADIATE RADIO FREQUENCY ENERGY AND IF NOT INSTALLED AND USED IN ACCORDANCE WITH INSTRUCTIONS, MAY CAUSE HARMFUL INTERFERENCE TO RADIO COMMUNICATIONS.