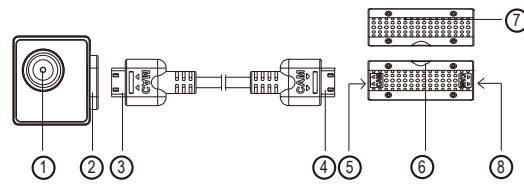


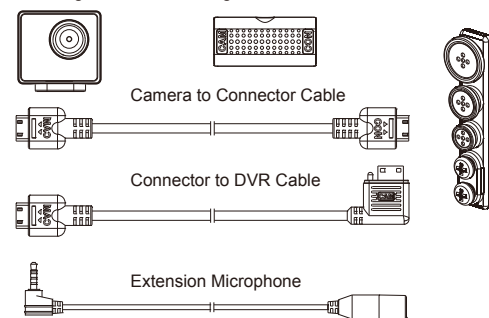
### 1. Name and Parts



- 1. Camera Lens
- 2. HDMI Socket of Camera
- 3. HDMI Jack of Cable
- 4. HDMI Jack of Cable
- 5. HDMI Socket of Connector
- 6. Extension Mic Socket
- 7. Built-in Microphone
- 8. HDMI Socket of Connector

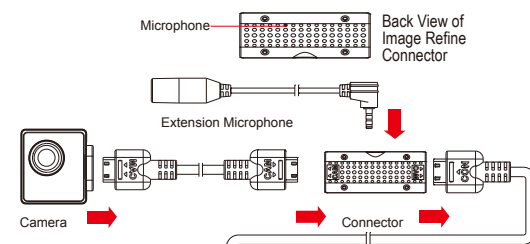
### 2. Package Content

WDR Digital Camera Image Refine Connector Covert Lens Cap



(1)

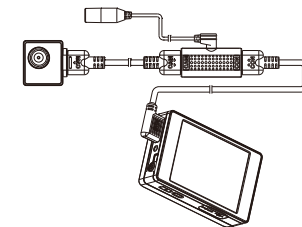
### 3. Camera Setup Illustration



1. Connect camera to connector using required cable.
2. Plug-in extension microphone to proper socket of the connector.
3. Connect connector to portable DVR using required cable.

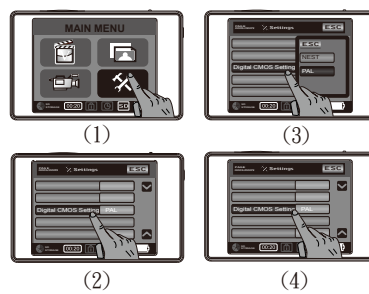
Portable DVR PV-500EVO2

#### Connection of all Components



(2)

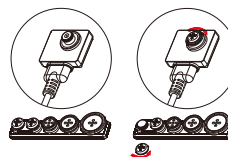
### 4. Setting Video Signal System



1. Press selection "Setting" from Main Menu.
2. Drag the Setting Menu down to select "Digital CMOS Setting".
3. Make the selection either PAL or NTSC based on user country's video signal system.
4. After selection is made, press "Digital CMOS Setting" again to complete the setting.

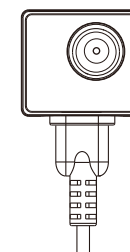
### 5. Interchange Covert Lens Cap

1. Unscrew the desired covert lens cap in counterclockwise direction from the set.
2. Place the unscrewed covert lens piece onto camera lens cap.
3. Screw in clockwise direction to secure the covert lens cap.



(3)

## C1144 HD CMOS WDR Digital Camera Quick Guide



Law Enforcement Products Manufacturer  
**LawMate®**