

Please note: The data stored on the Spy Cobra Deluxe can only be read after it has been transferred to a PC. This process decrypts logged files, enabling the user to access them normally. To move the data to a PC, simply insert the Spy Cobra Deluxe into the USB port and click the 'Move Data to PC' button from the right hand side of the admin panel.

thumbsUp!

SPY COBRA DELUXE

If there is more than one user account on the monitored PC, the log file names will display the logged user account and date stamp. Log filenames are saved in the format (loggedusername_dateandtime)

Additionally you can configure these options by clicking 'Configure Installed Spy Cobra Deluxe'.

Please Note: Some versions of anti-spyware may remove the Spy Cobra Deluxe admin application from the device. In case the admin application is removed by any anti-spyware or accidentally deleted, please follow the instructions to reinstall the application.

Instructions to reinstall admin.exe:

Insert the Spy Cobra Deluxe into the USB port
Open 'My Computer' and double click to open the Spy Cobra Deluxe drive
From the menu bar, select 'Tools' > 'Folder Options'
From the folder options menu, select 'View' from the menu bar
Under advance settings, tag 'Show Hidden Files and Folders'. This can be found under 'Files and Folders' > 'Hidden Files and Folders'
Select 'Apply', then 'OK'
A 7-zip file will now be visible in the Spy Cobra Deluxe device. You will need to download an application such as WinZip or winRAR, both of which are free to download
Double click to unzip the admin.exe file. If you are prompted for a password, please enter 'cobra'
Double click on the admin panel folder
Use the unzip application to extract the admin.exe file to your preferred location (e.g. desktop)
Open the saved file from the location it was saved to at Step 10. Copy and paste the admin file onto the Spy Cobra Deluxe drive. The application is ready to use again.

PLEASE NOTE: It is strongly advised that you make a backup of the admin.exe file somewhere on your PC in case it is accidentally erased. You can then simply copy and paste it back onto the Spy Cobra drive if later required.

Technical Support:

After running the Spy Cobra Deluxe application you can press the F1 key to see the device serial number and contact information.

Email Support – HYPERLINK "mailto:support@spycobra.com" support@spycobra.com

Important Note: Only one Spy Cobra Deluxe can be used on any computer at any time. Each Spy Cobra Deluxe is unique and has its own encryption, so the same unit is required to access captured logs and screenshots.

Windows and Windows Vista are trademarks of Microsoft Corporation, registered in the United States and other countries. Other names may be trademarks of their respective owners.



Distributed by Thumbs Up (UK) Ltd
Ruislip, HA4 0EJ, UK
www.thumbsupuk.com

Features:

- Discreetly installs onto any Windows PC (not Mac compatible)
- Super-fast installation takes just 15seconds
- Monitors every keystroke
- Takes screenshots at user set intervals
- Detects phrases and sends screenshots via email
- Allows you to set interval time of monitoring emails
- Stamp email sending/monitoring with the date & time
- Key word detection; when a key word is typed, a screen shot will be taken
- Remembers all websites visited
- Detects encrypted password keys
- Detects special characters and function keys
- Locally stored data is strongly encrypted with a unique key for each device
- Future proof design
- No specialist knowledge required for use
- Can be used to monitor remotely via email or user can insert key to retrieve information manually and view the information later

IMPORTANT: Ensure you disable the computers anti-virus protection before inserting into the USB port.

To use:

Insert the Spy Cobra Deluxe unit into the target computer
Go to 'My Computer'
Open the 'SC_DELUXE' drive
Click on Admin icon and follow instructions
Click on 'Install Spy Cobra'
The software is now installed on the PC (this will be undetectable in normal use)
Now press 'configure' to set up Spy Cobra Deluxe and select how often you want to take screenshots or receive emails

Functions:

- Send every captured screenshot - If this option is checked, every screenshot will automatically be sent by email. Your chosen email address must be specified in the sending options.
- Minimal screenshot number - Set the minimum number of screenshots you wish Spy Cobra Deluxe to send, e.g. if you set it to 5, you will receive 5 screenshots in one email.
- Send every captured text to email after a period of time - If this option is checked, every captured piece of text will be sent to your specified email address at pre-arranged intervals. The period of time between emails is indicated in minutes.
- Send every captured text to email at a specific time - If this option is checked, all captured text will be emailed to you at a specific time every day. Or, if a specific date is checked, all captured text since your last notification will be emailed to you on a specific date at a specific time.

Note: Once screenshots are sent successfully on email they are deleted from the monitored machine itself.

Email Settings:

Username: Enter username as your full email address
Password: Your chosen password
SMTP settings (outgoing server details)
For example: Gmail = smtp.gmail.com / Yahoo (free) = smtp.mail.yahoo.com / Yahoo Mail Plus (paid) = plus.smtp.mail.yahoo.com | (Please note that the above smtp addresses are only examples. It is advisable to check your email provider's settings to obtain the correct smtp address)
Press 'Test SMTP settings' to test the settings are correct.
Note: If the test email function doesn't work, please check the firewall settings on the PC or server, as this may prevent the test email from being sent. Alternatively, try using a different email client. E.G.

Spy Cobra Deluxe is an advanced hardware-software combination solution for monitoring Windows PCs.

Once the software is installed, the Spy Cobra Deluxe monitoring tool can be removed, leaving no signs that the computer is being monitored.

Spy Cobra Deluxe has the ability to covertly email you screenshots, keystrokes and other user activity as and when they occur. You do not need physical access to the computer you are monitoring to retrieve the information gathered, but if you'd rather use it that way, you still can.

Disclaimer

Please note that the Spy Cobra Deluxe device is not intended for breaking into computer systems or for causing distress to users who are unaware they're being monitored.

Using the Spy Cobra Deluxe to record other people's keystrokes or to break into another person's computer or online accounts without his/her knowledge is an illegal activity in most countries and the device should definitely not be used for these purposes.

It is intended for use by employers, authorised system administrators and by the individual owner of a personal computer being monitored.

Spy Cobra Deluxe and its partners, the device's creator, and its employees assume no liability and are not responsible for any misuse or damage caused by the Spy Cobra Deluxe monitoring tool.

Users take responsibility for obeying all effective laws in their own country.

IMPORTANT NOTE: It is strongly recommended that you write down the device's serial number and store it somewhere safe. This will be required should you need to contact technical support. To find out the serial number, open the Spy Cobra Deluxe's admin panel and press F1. This will display the 20-digit serial number.

NOTE: Disable the PCs anti-virus protection software before inserting the Spy Cobra into the USB port

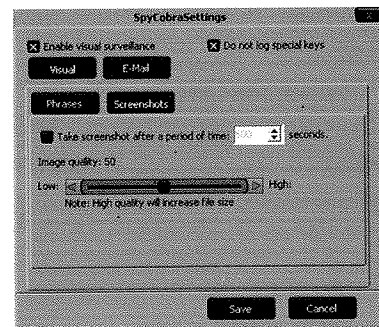
Anytime you want to see what websites your children or employees are visiting or who/what they are chatting to/about, simply plug your Spy Cobra Deluxe into a USB Port.

You can monitor both sides of IM conversations or request that the Spy Cobra Deluxe displays all recent activity. It is also possible to check the sender and recipient of every email sent or received.

You can also capture screenshots at regular intervals or when a trigger word is typed. You can then choose to have them stored or covertly emailed to you – perfect for monitoring a user's activity as and when it occurs.

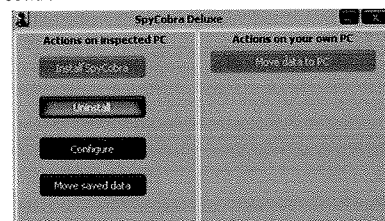
There are no special keystrokes or passwords to remember, just plug the Spy Cobra Deluxe into the computer you wish to monitor and it will launch and install itself.

In addition, you can specify the image quality of the screenshots taken. Lower quality will generate small files, whereas high quality will generate larger files.



When the software is installed and you have configured the screenshot settings, simply remove the Spy Cobra Deluxe and take it away with you.

With the Spy Cobra Deluxe version, you do not need physical access to the computer you are monitoring to retrieve the information as it has the ability to covertly email you screenshots. However, if you'd rather check the information gathered locally, simply reinsert the Spy Cobra Deluxe unit into the computer being monitored and run the software by clicking on the Spy Cobra icon that will appear. When the administrator panel appears, click the 'Move Saved Data' option and within a few seconds it will save screenshots and captured data to the Spy Cobra unit.



Now you can unplug the Spy Cobra Deluxe and access the data saved by plugging it into any compatible computer of your choice. Plug the device into the PC on which you wish to view the data. Select 'move data to PC' from the admin panel. This will allow you to choose the location where you want to save the logged files. Select your preferred location and then click 'OK'.

The Spy Cobra Deluxe will then create a folder named 'SAVEDATA' at this location. Inside this folder you will find two subfolders, 'KEYS' and 'SCREENS'.

Inside the 'KEYS' folder you can view the key log. Inside the 'SCREENS' folder you can view the screenshots taken.